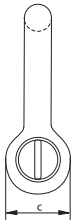
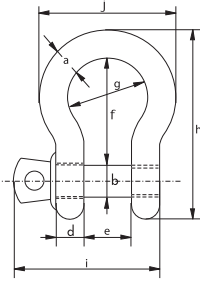




G-4161



## Green Pin® Bow Shackle SC

### Standard bow shackle with screw collar pin

- **Material:** bow and pin high tensile steel, grade 60, quenched and tempered
- **Safety factor:** MBL equals 6 x WLL
- **Standard:** ISO 2415, EN 13889 and meets performance requirements of US Fed. Spec. RR-C-271 Type IVA Class 2, grade A, from 2 t and upward these shackles comply with ASME B30.26
- **Finish:** hot dipped galvanized
- **Temperature range:** -40 °F up to +392 °F
- **Certification:** 2.1 2.2 3.1 MTC\* DNV 0378 CE IIA ABS PDA ABS MA
- **Article code:** scan QR code to see article codes

Scan for additional product details



working load limit	diameter bow	diameter pin	diameter eye	width eye	width inside	length inside	width bow	length	length	width	weight each
metric t	a inch	b inch	c inch	d inch	e inch	f inch	g inch	h inch	i inch	j inch	lbs
0.33	3/16	1/4	15/32	3/16	3/8	7/8	5/8	1 13/32	1 5/32	1 1/32	0.04
0.5	1/4	5/16	5/8	9/32	15/32	1 5/32	25/32	1 7/8	1 1/2	1 11/32	0.11
0.75	5/16	3/8	25/32	11/32	17/32	1 1/4	7/8	2 7/32	1 27/32	1 9/16	0.22
1	3/8	7/16	29/32	13/32	21/32	1 15/32	1 1/32	2 17/32	2 1/8	1 13/16	0.31
1.5	7/16	1/2	31/32	7/16	3/4	1 11/16	1 5/32	2 7/8	2 11/32	2	0.42
2	1/2	5/8	1 11/32	1/2	7/8	2	1 1/4	3 17/32	2 7/8	2 5/16	0.79
3.25	5/8	3/4	1 9/16	5/8	1 1/16	2 17/32	1 11/16	4 11/32	3 1/2	2 15/16	1.39
4.75	3/4	7/8	1 13/16	3/4	1 7/32	3	2	5 3/32	4 1/16	3 1/2	2.23
6.5	7/8	1	2 1/16	7/8	1 13/32	3 9/32	2 9/32	5 21/32	4 11/16	4 1/32	3.31
8.5	1	1 1/8	2 5/16	31/32	1 11/16	3 3/4	2 11/16	6 15/32	5 13/32	4 21/32	4.87
9.5	1 1/8	1 1/4	2 5/8	1 3/32	1 27/32	4 1/4	2 15/16	7 5/16	6 1/32	5 5/32	6.97
12	1 1/4	1 3/8	2 7/8	1 1/4	2	4 17/32	3 9/32	7 29/32	6 11/16	5 25/32	9.5
13.5	1 3/8	1 1/2	3 1/8	1 3/8	2 1/4	5 1/4	3 5/8	8 15/16	7 3/16	6 3/8	12.3
17	1 1/2	1 5/8	3 15/32	1 1/2	2 3/8	5 3/4	3 29/32	9 13/16	8	6 7/8	16.38
25	1 3/4	2	4 3/32	1 25/32	2 29/32	7	4 31/32	11 13/16	9 9/16	8 1/2	27.6
35	2	2 1/4	4 13/32	1 31/32	3 9/32	7 3/4	5 7/16	13 1/16	10 23/32	9 3/8	37.9
42.5	2 1/4	2 9/16	5 3/16	2 1/4	3 3/4	8 3/4	6 5/16	14 7/8	12 7/32	10 25/32	58
55	2 1/2	2 3/4	5 23/32	2 9/16	4 1/8	10 1/4	7 3/32	17 1/16	13 17/32	12 7/32	83

CAD RFID INFO

